

## The Tracking Magnet EVO Recessed

High-tech LED lighting system for interior architecture

### Description

The new Tracking Magnet 48V system is creative, flexible, reliable and precise. Accent luminaires are installed by a magnetic fastening system and a secondary mechanical fastener. The range of luminaires is composed of accent illumination modules with different optics and linear luminaires with the Flos signature design. The extruded aluminum housing creates a clean 0.6" slot that can be run up, around and across walls and ceilings. The Tracking Magnet is available in recessed, surface, or pendant mounted applications, making it an option in even the most varied of job conditions. Vertical and horizontal corners complete the system. The Tracking Magnet is perfect for retail displays where frequent changes are typical and absolute performance is required.

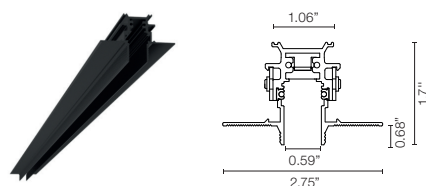
### Lamp

System Lamp Type	LED
Color Temperature	2700K, 3000K, *3500K, *4000K (See Notes)
Color Rendering	CRI90
Application	General Lighting / Accent lighting

### Physical

Material	Aluminum
Ingress Protection Rating	IP20
Finishes	■ 14 Black
Installation type	Ceiling Recessed
Environment	Indoor
Field cuttable	Yes

### Recessed Installation



### Light Modules



### Certifications



### Photometrics

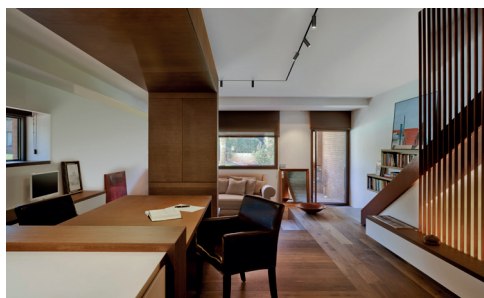
For current IES files please visit  
arch.flosusa.com

### Warranty

2 years from date of sale.

### Electrical & Control

Driver location	Remote
Driver Input Voltage	120V-277V
Driver Output Voltage	48V
Maximum Driver Wattage	Class 2 - 96W
Control	Standard 0-10V dimming / DALI / On board / Casambi for Light Shadow Spot and Multi Spot Mini.
Nº Circuit	1 circuit



## The Tracking Magnet EVO Recessed

High-tech LED lighting system for interior architecture

### Notes

EC to supply site cabling from driver to track location.

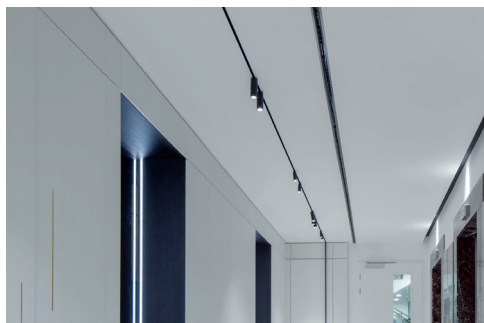
Wattage per linear foot is dependent upon quantity and type of light modules used.

Spots and linear luminaires available with individually addressable DALI-Wireless circuitry, 0-10V (from 10% up to 100%) Dimming, Casambi for Light Shadow Spot and Multi Spot Mini.

0-10V Fixtures come from the factory set up at the lowest level 10% they always required a 0-10V signal to achieve the maximum output.

Trimless extruded aluminum track to be recessed in sheet rock ceilings and walls 5/8" thick, Also available in 1/2" Consult factory

All linear profiles are field cuttable.



### Recessed Installation

3500K , 4000K and other CCT available but not cataloged. Consult factory for additional color temperatures.

### How To Specify

#### A. Select and position corners

1. Horizontal - Connect sections on flat surfaces (90° corner)
2. Inside - Transition from wall to ceiling (inside corner)
3. External - Turn outside corners for walls and soffits (270° corner)

#### C. Drivers

Quantity of drivers determined by total wattage or light elements in section (total maximum possible per linear foot is 29W). Maximum driver distance is 15'. Locate drivers nearby.

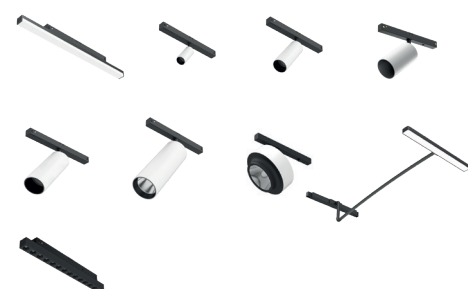
#### B. Fill lengths between corners with Linear Housings

Select dimmable (0-10V fixtures) or non dimmable track (Built-in dimmer fixtures). Available section lengths are 3.3', 4.9', 6.7' or 8.2'. Profile can be easily cut to site to exact length and joined together.

#### D. Select Spot heads

Light Strips are available in three nominal lengths: 11.8", 23.6", 35.4", 47.2" and 59'. Individual Spots are Spot 50, Spot 90, Spot 120, Spot 150 and Anthony.

### Light Modules



### Certifications



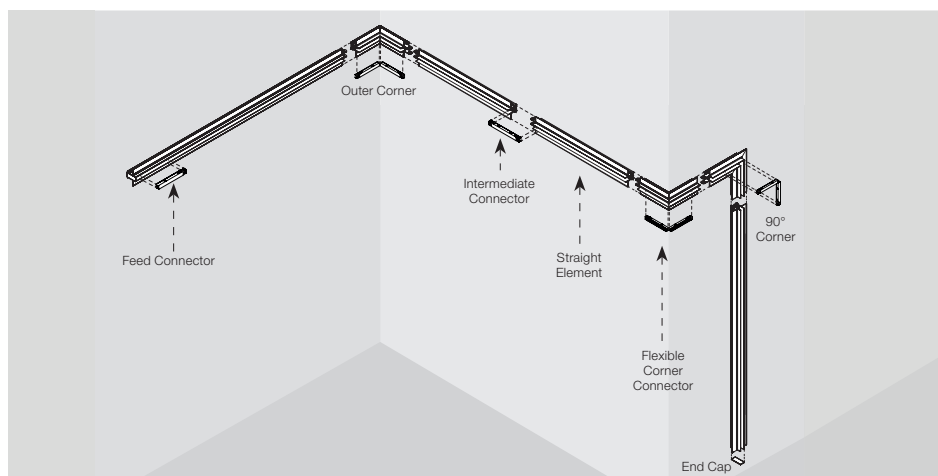
### Photometrics

For current IES files please visit  
[arch.flosusa.com](http://arch.flosusa.com)

### Warranty

2 years from date of sale.

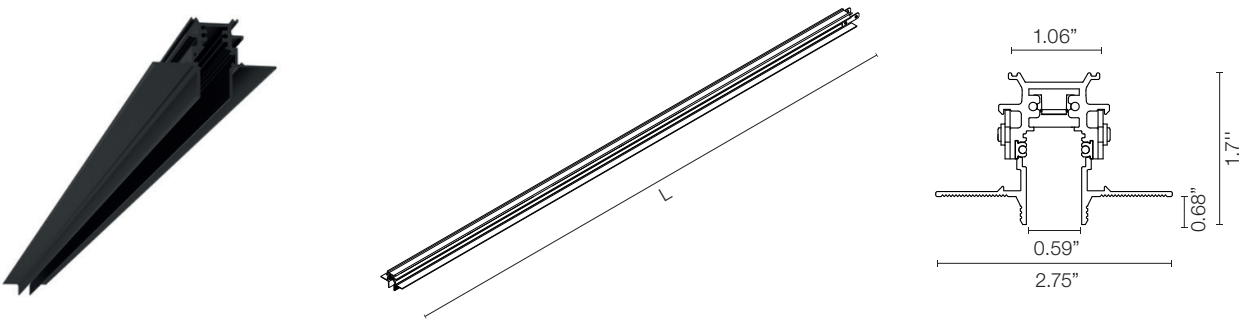
FLOS. USA  
36 East 31st Street  
Suite 402  
New York N.Y. 10016  
(800) 841.4011



The Tracking Magnet EVO Recessed

High-tech LED lighting system for interior architecture

Track



How to specify: 06.5080.14

Table with 4 columns: Length, Part Number, Finish, Dimming Protocol. It lists four track lengths (39.4", 59", 78.7", 98.4") and their corresponding part numbers (06.5080 to 06.5083). The finish is specified as 14 = Black, and the dimming protocols are Dimmable on Board and Dimmable Casambi.

Note: Track can be cut to different lengths in field

How to specify: 06.5000.14

Table with 4 columns: Length, Part Number, Finish, Dimming Protocol. It lists four track lengths (39.4", 59", 78.7", 98.4") and their corresponding part numbers (06.5000 to 06.5003). The finish is specified as 14 = Black, and the dimming protocols are 1-10V, 10% Dimming, DALI, 10% Dimming, and Dimmable Casambi.

Note: Track can be cut to different lengths in field

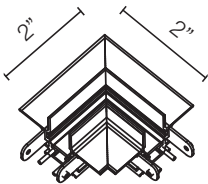
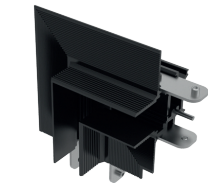
The Tracking Magnet EVO Recessed

High-tech LED lighting system for interior architecture

Corners

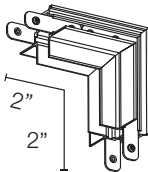
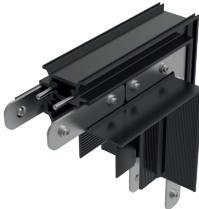
Mechanical Horizontal 90° Corner. [2" x 2"]
Change direction of the track on the same plane

Part Number:
06.5005.14



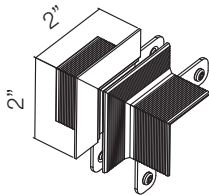
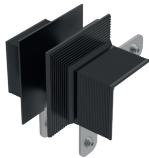
Mechanical Inside Corner. [2" x 2"]
Corner that goes from wall to wall inside corner or from wall to ceiling

Part Number:
06.5006.14



Mechanical Outside Corner. [2" x 2"]
Corner that goes from wall to wall outside corner different plane




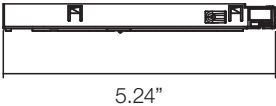
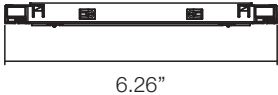
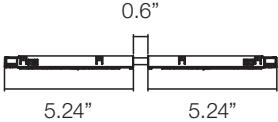
Part Number:
06.5007.14




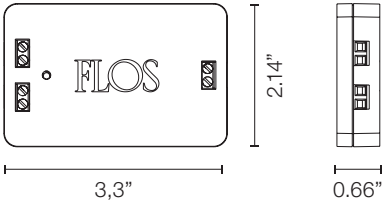
# The Tracking Magnet EVO Recessed

High-tech LED lighting system for interior architecture

## Required Connectors

Feed connector	Intermediate Straight connector	Flexible/Electrical Intermediate Corner
Part Number: ■ 08.0611.14	Part Number: ■ 08.0612.14	Part Number: ■ 08.0614.14
		
		

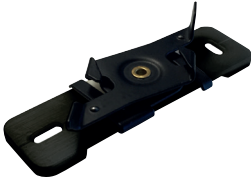


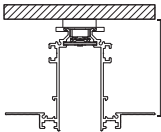
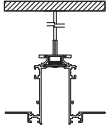
## Required Dimming Controllers

<p>Dimming Control Unit Box 48V 0-10V Required for a 0-10V Dimming installation. 1 Dimming control can control up to 20 fixtures</p>	
Part Number: ■ 08.0613.14A	
	
	

The Tracking Magnet EVO Recessed

High-tech LED lighting system for interior architecture

Required Accesories

Fixed Low-Clearance Mounting Kit ( 2 units).	Adjustable Ceiling Kits (1 unit)	End Cap kit ( 2 units)
Part Number: 08.8866.14	Part Number: 08.8867.14UL	Part Number: ■ 06.5008.14
		
		

Profile	Quantities Ceiling kit
39.37" / 59.06" [1000 mm/ 1500 mm]	2
78.74" / 98.42" [2000 mm/ 2500 mm]	3

The Tracking Magnet EVO Recessed

High-tech LED lighting system for interior architecture

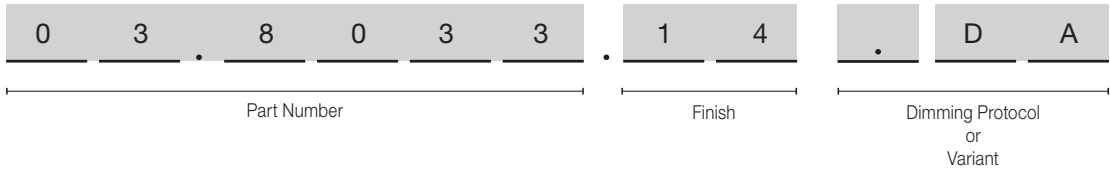
Required Drivers

LED power supply source for remote installation, 48V/96W, 120-277V, UL Listed	LED power supply source for remote installation, 48V/60W, 120-277V, UL Listed	LED power supply source for remote installation, 48V/30W, 120-277V, UL Listed
Part Number:  LEDSB96W48V-NDM-D01	Part Number:  LEDSB60W48V-NDM-D01	Part Number:  LEDSB30W48V-NDM-D01

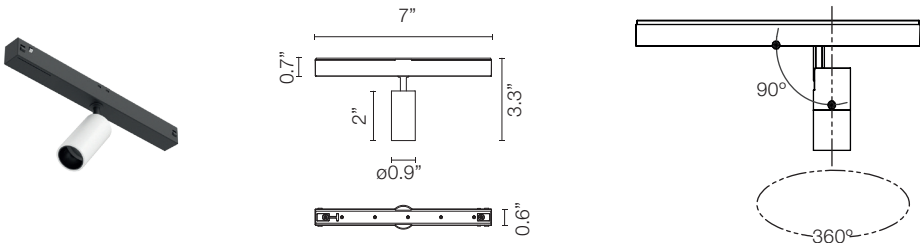
The Tracking Magnet EVO Recessed

High-tech LED lighting system for interior architecture

How to specify



Spot 50



CCT	CRI	Initial Lumens	Delivered Lumens	Watts	Beam Spread	Part Number	Finish	Dimming Protocol	Photometric
3000	90	307	212	3.5	26°	03.8033	<div> <div>40 = White</div> <div>14 = Black</div> <div>05 = Chrome</div> </div>	A Dimmable on Board A1V = 0-10V, 10% Dimming ADA = DALI, 10% Dimming	<div>           E(h) D(m)            h(m) 26°            1 1012 0.47            2 253 0.94            3 112 1.41            4 83 1.88            5 40 2.35         </div>
2700	90	286	205	3.5	26°	03.8032	<div> <div>40 = White</div> <div>14 = Black</div> <div>05 = Chrome</div> </div>	B Dimmable on Board B1V = 0-10V, 10% Dimming BDA = DALI, 10% Dimming	<div>           E(h) D(m)            h(m) 26°            1 977 0.47            2 244 0.94            3 109 1.41            4 61 1.88            5 39 2.35         </div>

Included Accessories Spot 50

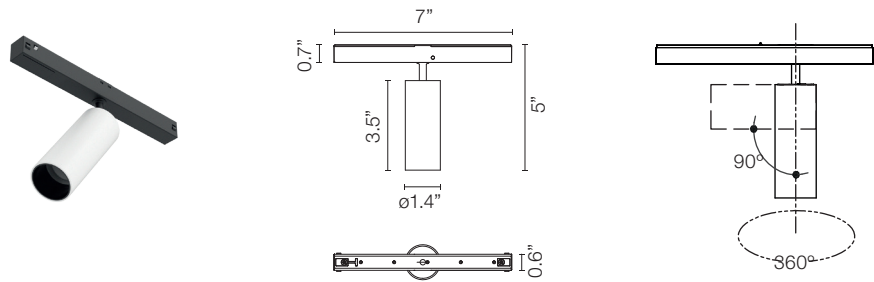
Cross Baffle	Honeycomb

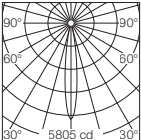
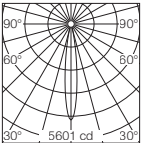
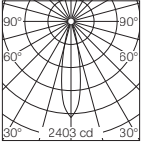
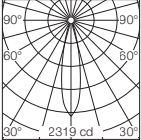


The Tracking Magnet EVO Recessed

High-tech LED lighting system for interior architecture

Spot 90



CCT	CRI	Initial Lumens	Delivered Lumens	Watts	Beam Spread	Part Number	Finish	Dimming Protocol	Photometric														
3000	90	656	443	8.5	14°	03.8043	<div><div></div> 40 = White</div> <div><div></div> 14 = Black</div> <div><div></div> 05 = Chrome</div>	<div>A Dimmable on Board</div> <div>A1V = 0-10V, 10% Dimming</div> <div>ADA = DALI, 10% Dimming</div> <div><div>B Dimmable on Board</div><div>B1V = 0-10V, 10% Dimming</div><div>BDA = DALI, 10% Dimming</div></div>	<div><table><thead><tr><th>E(lx)</th><th>D(m)</th></tr></thead><tbody><tr><td>h(m)</td><td>14°</td></tr><tr><td>1</td><td>5805 0.25</td></tr><tr><td>2</td><td>1451 0.49</td></tr><tr><td>3</td><td>645 0.74</td></tr><tr><td>4</td><td>363 0.98</td></tr><tr><td>5</td><td>232 1.23</td></tr></tbody></table></div>	E(lx)	D(m)	h(m)	14°	1	5805 0.25	2	1451 0.49	3	645 0.74	4	363 0.98	5	232 1.23
E(lx)	D(m)																						
h(m)	14°																						
1	5805 0.25																						
2	1451 0.49																						
3	645 0.74																						
4	363 0.98																						
5	232 1.23																						
2700	90	610	428	8.5	14°	03.8042	<div><table><thead><tr><th>E(lx)</th><th>D(m)</th></tr></thead><tbody><tr><td>h(m)</td><td>14°</td></tr><tr><td>1</td><td>5601 0.25</td></tr><tr><td>2</td><td>1400 0.49</td></tr><tr><td>3</td><td>622 0.74</td></tr><tr><td>4</td><td>350 0.98</td></tr><tr><td>5</td><td>224 1.23</td></tr></tbody></table></div>	E(lx)	D(m)	h(m)	14°	1	5601 0.25	2	1400 0.49	3	622 0.74	4	350 0.98	5	224 1.23		
E(lx)	D(m)																						
h(m)	14°																						
1	5601 0.25																						
2	1400 0.49																						
3	622 0.74																						
4	350 0.98																						
5	224 1.23																						
3000	90	656	406	8.5	22°	03.8045	<div><table><thead><tr><th>E(lx)</th><th>D(m)</th></tr></thead><tbody><tr><td>h(m)</td><td>22°</td></tr><tr><td>1</td><td>2403 0.38</td></tr><tr><td>2</td><td>601 0.77</td></tr><tr><td>3</td><td>267 1.15</td></tr><tr><td>4</td><td>150 1.54</td></tr><tr><td>5</td><td>96 1.92</td></tr></tbody></table></div>	E(lx)	D(m)	h(m)	22°	1	2403 0.38	2	601 0.77	3	267 1.15	4	150 1.54	5	96 1.92		
E(lx)	D(m)																						
h(m)	22°																						
1	2403 0.38																						
2	601 0.77																						
3	267 1.15																						
4	150 1.54																						
5	96 1.92																						
2700	90	610	392	8.5	22°	03.8044	<div><table><thead><tr><th>E(lx)</th><th>D(m)</th></tr></thead><tbody><tr><td>h(m)</td><td>22°</td></tr><tr><td>1</td><td>2319 0.38</td></tr><tr><td>2</td><td>580 0.77</td></tr><tr><td>3</td><td>258 1.15</td></tr><tr><td>4</td><td>145 1.54</td></tr><tr><td>5</td><td>93 1.92</td></tr></tbody></table></div>	E(lx)	D(m)	h(m)	22°	1	2319 0.38	2	580 0.77	3	258 1.15	4	145 1.54	5	93 1.92		
E(lx)	D(m)																						
h(m)	22°																						
1	2319 0.38																						
2	580 0.77																						
3	258 1.15																						
4	145 1.54																						
5	93 1.92																						

Included Accessories Spot 90

Cross Baffle



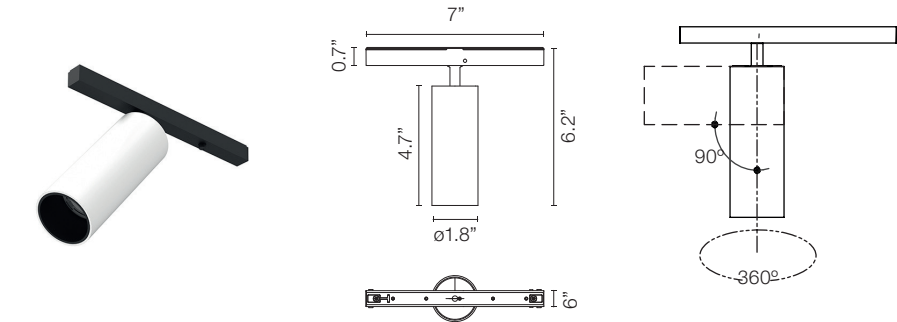
Honeycomb



The Tracking Magnet EVO Recessed

High-tech LED lighting system for interior architecture

Spot 120 Power LED



CCT	CRI	Initial Lumens	Delivered Lumens	Watts	Beam Spread	Part Number	Finish	Dimming Protocol	Photometric
3000	90	779	558	12	11°	03.8053	40 = White 14 = Black 05 = Chrome	A Dimmable on Board A1V = 0-10V, 10% Dimming ADA = DALI, 10% Dimming	
2700	90	724	539	12	11°	03.8052			
3000	90	779	505	12	17°	03.8055			
2700	90	724	487	12	17°	03.8054			

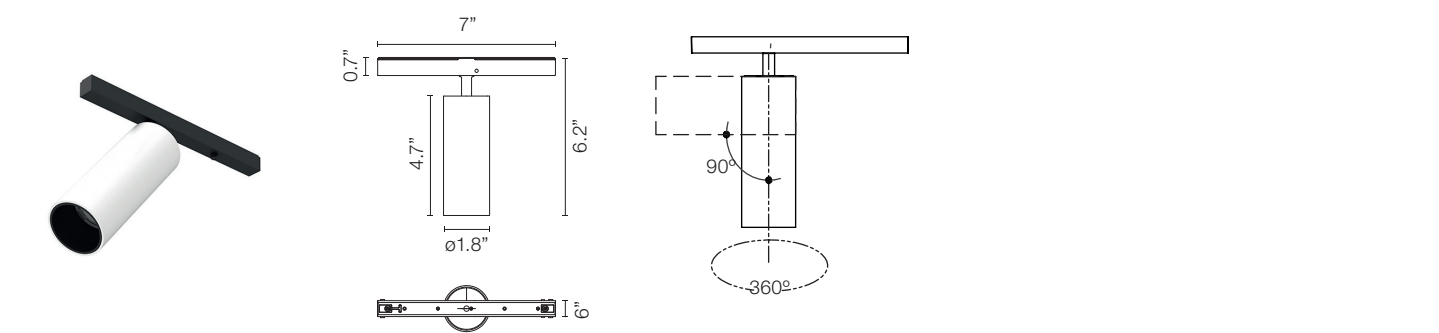
Included Accessories Spot 120

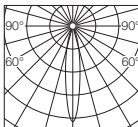
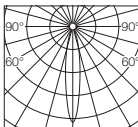
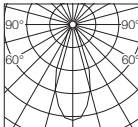
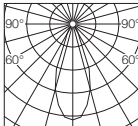
Cross Baffle	Honeycomb

The Tracking Magnet EVO Recessed

High-tech LED lighting system for interior architecture

Spot 120 LED ARRAY



CCT	CRI	Initial Lumens	Delivered Lumens	Watts	Beam Spread	Part Number	Finish	Dimming Protocol	Photometric												
3000	90	1138	687	12.5	17°	03.8155	<div><div></div>40 = White</div> <div><div></div>14 = Black</div> <div><div></div>05 = Chrome</div>	<div>A Dimmable on Board</div> <div>A1V = 0-10V, 10% Dimming</div> <div>ADA = DALI, 10% Dimming</div>	<div><table><thead><tr><th>E(x)</th><th>D(m)</th></tr></thead><tbody><tr><td>1</td><td>4780 0.31</td></tr><tr><td>2</td><td>1195 0.61</td></tr><tr><td>3</td><td>531 0.92</td></tr><tr><td>4</td><td>299 1.23</td></tr><tr><td>5</td><td>191 1.53</td></tr></tbody></table><div>Luminous flux luminaire 687 lm</div></div>	E(x)	D(m)	1	4780 0.31	2	1195 0.61	3	531 0.92	4	299 1.23	5	191 1.53
E(x)	D(m)																				
1	4780 0.31																				
2	1195 0.61																				
3	531 0.92																				
4	299 1.23																				
5	191 1.53																				
2700	90	1075	654	12.5	17°	03.8154	<div><table><thead><tr><th>E(x)</th><th>D(m)</th></tr></thead><tbody><tr><td>1</td><td>4547 0.31</td></tr><tr><td>2</td><td>1137 0.61</td></tr><tr><td>3</td><td>505 0.92</td></tr><tr><td>4</td><td>284 1.23</td></tr><tr><td>5</td><td>182 1.53</td></tr></tbody></table><div>Luminous flux luminaire 654 lm</div></div>	E(x)	D(m)	1	4547 0.31	2	1137 0.61	3	505 0.92	4	284 1.23	5	182 1.53		
E(x)	D(m)																				
1	4547 0.31																				
2	1137 0.61																				
3	505 0.92																				
4	284 1.23																				
5	182 1.53																				
3000	90	1138	629	12.5	40°	03.8157	<div><table><thead><tr><th>E(x)</th><th>D(m)</th></tr></thead><tbody><tr><td>1</td><td>1437 0.73</td></tr><tr><td>2</td><td>359 1.45</td></tr><tr><td>3</td><td>160 2.18</td></tr><tr><td>4</td><td>90 2.91</td></tr><tr><td>5</td><td>57 3.64</td></tr></tbody></table><div>Luminous flux luminaire 629 lm</div></div>	E(x)	D(m)	1	1437 0.73	2	359 1.45	3	160 2.18	4	90 2.91	5	57 3.64		
E(x)	D(m)																				
1	1437 0.73																				
2	359 1.45																				
3	160 2.18																				
4	90 2.91																				
5	57 3.64																				
2700	90	1075	599	12.5	40°	03.8156	<div><table><thead><tr><th>E(x)</th><th>D(m)</th></tr></thead><tbody><tr><td>1</td><td>1367 0.73</td></tr><tr><td>2</td><td>342 1.45</td></tr><tr><td>3</td><td>152 2.18</td></tr><tr><td>4</td><td>85 2.91</td></tr><tr><td>5</td><td>55 3.64</td></tr></tbody></table><div>Luminous flux luminaire 599 lm</div></div>	E(x)	D(m)	1	1367 0.73	2	342 1.45	3	152 2.18	4	85 2.91	5	55 3.64		
E(x)	D(m)																				
1	1367 0.73																				
2	342 1.45																				
3	152 2.18																				
4	85 2.91																				
5	55 3.64																				

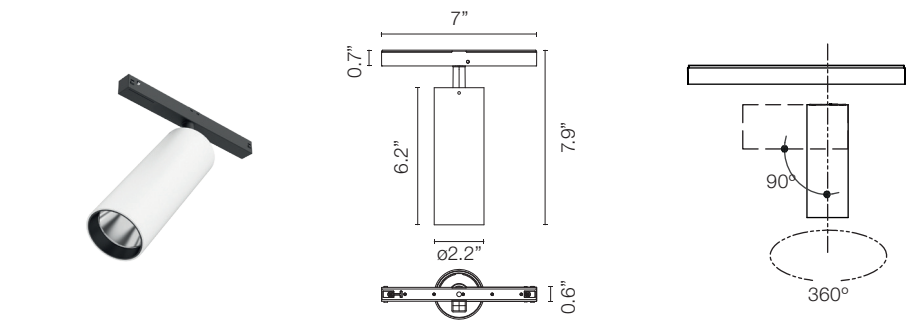
Included Accessories Spot 120

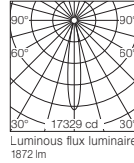
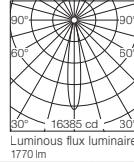
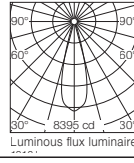
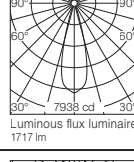
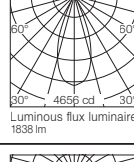
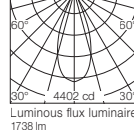
Cross Baffle	Honeycomb

The Tracking Magnet EVO Recessed

High-tech LED lighting system for interior architecture

Spot 150








CCT	CRI	Initial Lumens	Delivered Lumens	Watts	Beam Spread	Part Number	Finish	Dimming Protocol	Photometric												
3000	90	2115	1872	22.5	16°	03.8073	<div><div></div> 40 = White</div> <div><div></div> 14 = Black</div>	A Dimmable on Board A1V = 0-10V, 10% Dimming ADA = DALI, 10% Dimming	<div><table><thead><tr><th>E(h)</th><th>D(m)</th></tr></thead><tbody><tr><td>1</td><td>17329 0.28</td></tr><tr><td>2</td><td>4332 0.56</td></tr><tr><td>3</td><td>1925 0.84</td></tr><tr><td>4</td><td>1083 1.12</td></tr><tr><td>5</td><td>693 1.40</td></tr></tbody></table></div>	E(h)	D(m)	1	17329 0.28	2	4332 0.56	3	1925 0.84	4	1083 1.12	5	693 1.40
E(h)	D(m)																				
1	17329 0.28																				
2	4332 0.56																				
3	1925 0.84																				
4	1083 1.12																				
5	693 1.40																				
2700	90	2000	1770	22.5	16°	03.8072	<div><div></div> 05 = Chrome</div>	B Dimmable on Board B1V = 0-10V, 10% Dimming BDA = DALI, 10% Dimming	<div><table><thead><tr><th>E(h)</th><th>D(m)</th></tr></thead><tbody><tr><td>1</td><td>16385 0.28</td></tr><tr><td>2</td><td>4096 0.56</td></tr><tr><td>3</td><td>1821 0.84</td></tr><tr><td>4</td><td>1024 1.12</td></tr><tr><td>5</td><td>655 1.40</td></tr></tbody></table></div>	E(h)	D(m)	1	16385 0.28	2	4096 0.56	3	1821 0.84	4	1024 1.12	5	655 1.40
E(h)	D(m)																				
1	16385 0.28																				
2	4096 0.56																				
3	1821 0.84																				
4	1024 1.12																				
5	655 1.40																				
3000	90	2115	1816	22.5	28°	03.8075	<div><div></div> 40 = White</div> <div><div></div> 14 = Black</div>	A Dimmable on Board A1V = 0-10V, 10% Dimming ADA = DALI, 10% Dimming	<div><table><thead><tr><th>E(h)</th><th>D(m)</th></tr></thead><tbody><tr><td>1</td><td>8395 0.50</td></tr><tr><td>2</td><td>2099 1.00</td></tr><tr><td>3</td><td>933 1.50</td></tr><tr><td>4</td><td>525 2.00</td></tr><tr><td>5</td><td>336 2.50</td></tr></tbody></table></div>	E(h)	D(m)	1	8395 0.50	2	2099 1.00	3	933 1.50	4	525 2.00	5	336 2.50
E(h)	D(m)																				
1	8395 0.50																				
2	2099 1.00																				
3	933 1.50																				
4	525 2.00																				
5	336 2.50																				
2700	90	2000	1717	22.5	28°	03.8074	<div><div></div> 05 = Chrome</div>	B Dimmable on Board B1V = 0-10V, 10% Dimming BDA = DALI, 10% Dimming	<div><table><thead><tr><th>E(h)</th><th>D(m)</th></tr></thead><tbody><tr><td>1</td><td>7938 0.50</td></tr><tr><td>2</td><td>1984 1.00</td></tr><tr><td>3</td><td>882 1.50</td></tr><tr><td>4</td><td>496 2.00</td></tr><tr><td>5</td><td>318 2.50</td></tr></tbody></table></div>	E(h)	D(m)	1	7938 0.50	2	1984 1.00	3	882 1.50	4	496 2.00	5	318 2.50
E(h)	D(m)																				
1	7938 0.50																				
2	1984 1.00																				
3	882 1.50																				
4	496 2.00																				
5	318 2.50																				
3000	90	2115	1838	22.5	40°	03.8077	<div><div></div> 40 = White</div> <div><div></div> 14 = Black</div>	A Dimmable on Board A1V = 0-10V, 10% Dimming ADA = DALI, 10% Dimming	<div><table><thead><tr><th>E(h)</th><th>D(m)</th></tr></thead><tbody><tr><td>1</td><td>4656 0.73</td></tr><tr><td>2</td><td>1164 1.46</td></tr><tr><td>3</td><td>517 2.18</td></tr><tr><td>4</td><td>291 2.91</td></tr><tr><td>5</td><td>186 3.64</td></tr></tbody></table></div>	E(h)	D(m)	1	4656 0.73	2	1164 1.46	3	517 2.18	4	291 2.91	5	186 3.64
E(h)	D(m)																				
1	4656 0.73																				
2	1164 1.46																				
3	517 2.18																				
4	291 2.91																				
5	186 3.64																				
2700	90	2000	1738	22.5	40°	03.8076	<div><div></div> 05 = Chrome</div>	B Dimmable on Board B1V = 0-10V, 10% Dimming BDA = DALI, 10% Dimming	<div><table><thead><tr><th>E(h)</th><th>D(m)</th></tr></thead><tbody><tr><td>1</td><td>4402 0.73</td></tr><tr><td>2</td><td>1101 1.46</td></tr><tr><td>3</td><td>489 2.18</td></tr><tr><td>4</td><td>275 2.91</td></tr><tr><td>5</td><td>176 3.64</td></tr></tbody></table></div>	E(h)	D(m)	1	4402 0.73	2	1101 1.46	3	489 2.18	4	275 2.91	5	176 3.64
E(h)	D(m)																				
1	4402 0.73																				
2	1101 1.46																				
3	489 2.18																				
4	275 2.91																				
5	176 3.64																				

The Tracking Magnet EVO Recessed

High-tech LED lighting system for interior architecture

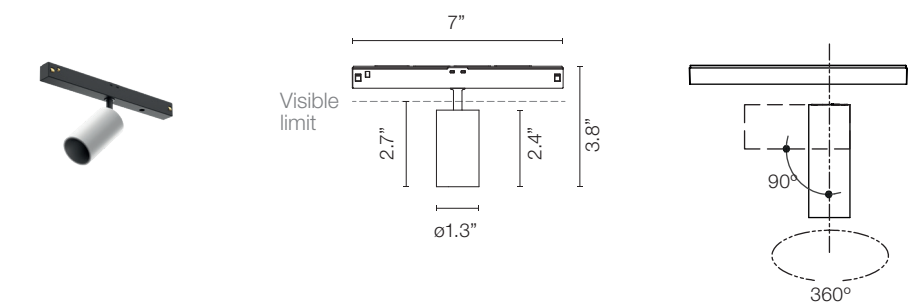
Optional Accessories Spot 150

Cross Baffle	Elliptical Lens	Flood Lens
Part Number: 08.8429.00	Part Number: 08.8431.00	Part Number: 08.8432.00
		
Honeycomb	Snoot shielding cone	
Part Number: 08.8428.00	Part Number: 08.0526.00	
		

The Tracking Magnet EVO Recessed

High-tech LED lighting system for interior architecture

Light Shadow Spot 30

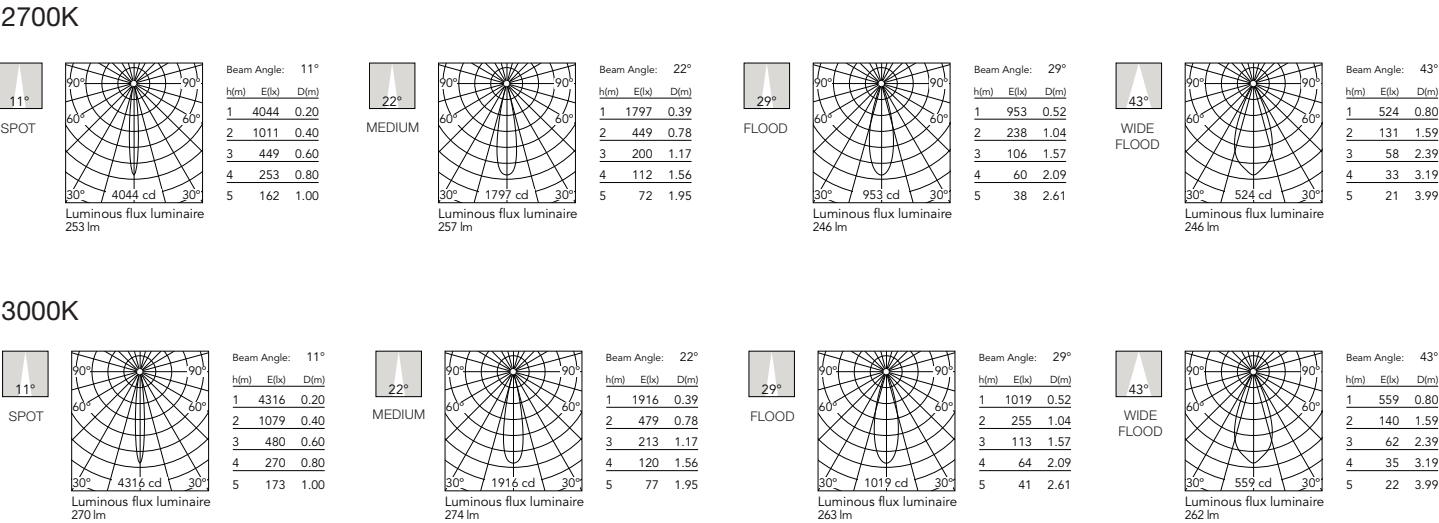


CCT	CRI	Initial Lumens	Delivered Lumens	Watts	Beam Spread	Part Number	Finish	Dimming Protocol
3000	90	318	270	4	11°	05.9005	<div> <div></div>40 = White <div></div>14 = Black <div></div>ER = Brushed Steel <div></div>ES = Brushed Bronze </div>	A = Dimmable on Board A1V = 0-10V, 10% Dimming ACB = Dimmable Casambi ADA = DALI, 10% Dimming
2700	90	298	253	4	11°	05.9000		
3000	90	318	274	4	22°	05.9006	<div> <div></div>40 = White <div></div>14 = Black <div></div>ER = Brushed Steel <div></div>ES = Brushed Bronze </div>	A = Dimmable on Board A1V = 0-10V, 10% Dimming ACB = Dimmable Casambi ADA = DALI, 10% Dimming
2700	90	298	257	4	22°	05.9001		
3000	90	318	263	4	29°	05.9007	<div> <div></div>40 = White <div></div>14 = Black <div></div>ER = Brushed Steel <div></div>ES = Brushed Bronze </div>	A = Dimmable on Board A1V = 0-10V, 10% Dimming ACB = Dimmable Casambi ADA = DALI, 10% Dimming
2700	90	298	246	4	29°	05.9002		
3000	90	318	262	4	43°	05.9008	<div> <div></div>40 = White <div></div>14 = Black <div></div>ER = Brushed Steel <div></div>ES = Brushed Bronze </div>	A = Dimmable on Board A1V = 0-10V, 10% Dimming ACB = Dimmable Casambi ADA = DALI, 10% Dimming
2700	90	298	246	4	43°	05.9003		

The Tracking Magnet EVO Recessed

High-tech LED lighting system for interior architecture

Photometric Light Shadow Spot 30



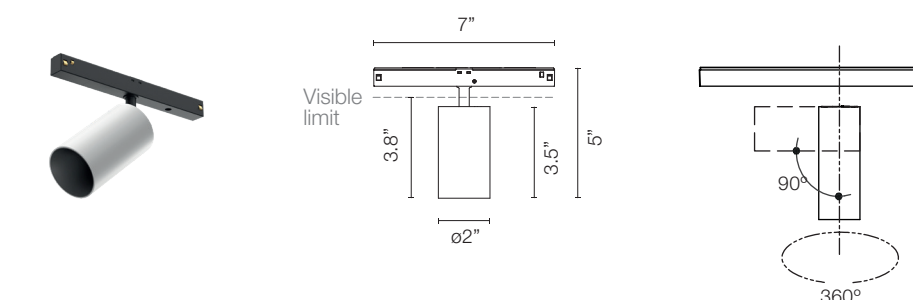
Optional Accessories Light Shadow Spot 30

Honeycomb	Dicroic CCT Filter	Dicroic CCT Filter
	INCREASE	DECREASE
	2700K >> 3125±75K	2700K >> 2450±75K
	3000K >> 3600±75K	3000K >> 2700±75K
Part Number:	Part Number:	Part Number:
08.0790.00	08.0791.00	08.0792.00
		

## The Tracking Magnet EVO Recessed

High-tech LED lighting system for interior architecture

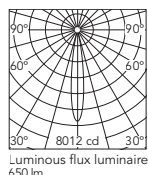
### Light Shadow Spot 45



CCT	CRI	Initial Lumens	Delivered Lumens	Watts	Beam Spread	Part Number	Finish	Dimming Protocol
3000	90	844	686	10.5	15°	05.9035	<div>40 = White</div> <div>14 = Black</div> <div>ER = Brushed Steel</div> <div>ES = Brushed Bronze</div>	Dimmable on Board 1V = 0-10V, 10% Dimming CB = Dimmable Casambi DA = DALI, 10% Dimming
2700	90	799	650	10.5	15°	05.9030		
3000	90	844	682	10.5	21°	05.9036	<div>40 = White</div> <div>14 = Black</div> <div>ER = Brushed Steel</div> <div>ES = Brushed Bronze</div>	Dimmable on Board 1V = 0-10V, 10% Dimming CB = Dimmable Casambi DA = DALI, 10% Dimming
2700	90	799	645	10.5	21°	05.9031		
3000	90	844	682	10.5	31°	05.9037	<div>40 = White</div> <div>14 = Black</div> <div>ER = Brushed Steel</div> <div>ES = Brushed Bronze</div>	Dimmable on Board 1V = 0-10V, 10% Dimming CB = Dimmable Casambi DA = DALI, 10% Dimming
2700	90	799	646	10.5	31°	05.9032		

### Photometric Light Shadow Spot 45

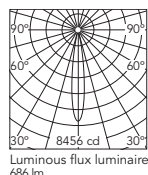
#### Spot 15° 2700K



Beam Angle: 15°

h(m)	E(lx)	D(m)
1	8012	0.27
2	2003	0.54
3	890	0.80
4	501	1.07
5	320	1.34

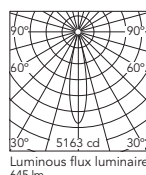
#### 3000K



Beam Angle: 15°

h(m)	E(lx)	D(m)
1	8456	0.27
2	2114	0.54
3	940	0.80
4	528	1.07
5	338	1.34

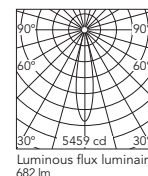
#### Medium 21° 2700K



Beam Angle: 21°

h(m)	E(lx)	D(m)
1	5163	0.36
2	1291	0.73
3	574	1.09
4	323	1.46
5	207	1.82

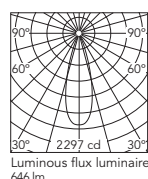
#### 3000K



Beam Angle: 21°

h(m)	E(lx)	D(m)
1	5459	0.36
2	1365	0.73
3	607	1.09
4	341	1.46
5	218	1.82

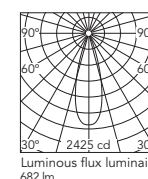
#### Flood 31° 2700K



Beam Angle: 31°

h(m)	E(lx)	D(m)
1	2296	0.56
2	574	1.11
3	255	1.67
4	144	2.22
5	92	2.78

#### 3000K



Beam Angle: 31°

h(m)	E(lx)	D(m)
1	2424	0.56
2	606	1.11
3	269	1.67
4	152	2.22
5	97	2.78



# The Tracking Magnet EVO Recessed

High-tech LED lighting system for interior architecture

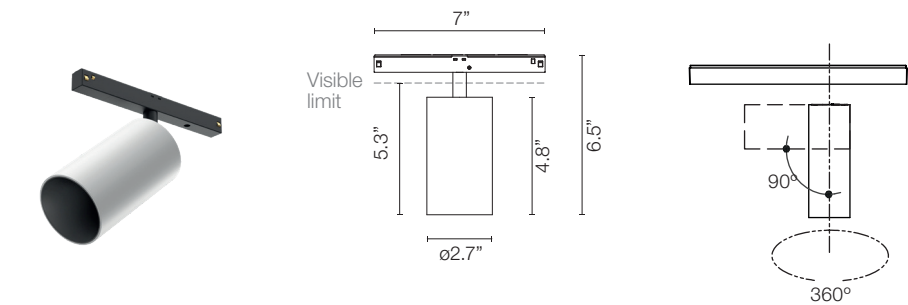
## Optional Accessories Light Shadow Spot 45

Honeycomb	Dicroic CCT Filter  INCREASE 2700K >> 3125±75K 3000K >> 3600±75K	Dicroic CCT Filter  DECREASE 2700K >> 2450±75K 3000K >> 2700±75K
Part Number:  08.0793.00	Part Number:  08.0794.00	Part Number:  08.0795.00
		

The Tracking Magnet EVO Recessed

High-tech LED lighting system for interior architecture

Light Shadow Spot 60



CCT	CRI	Initial Lumens	Delivered Lumens	Watts	Beam Spread	Part Number	Finish	Dimming Protocol
3000	90	844	808	10	9°	05.9065	<div>40 = White</div> <div>14 = Black</div> <div>ER = Brushed Steel</div> <div>ES = Brushed Bronze</div>	Dimmable on Board 1V = 0-10V, 10% Dimming CB = Dimmable Casambi DA = DALI, 10% Dimming
2700	90	799	765	10	9°	05.9060		
3000	90	1751	1375	20	15°	05.9066	<div>40 = White</div> <div>14 = Black</div> <div>ER = Brushed Steel</div> <div>ES = Brushed Bronze</div>	Dimmable on Board 1V = 0-10V, 10% Dimming CB = Dimmable Casambi DA = DALI, 10% Dimming
2700	90	1593	1251	20	15°	05.9061		
3000	90	1751	1427	20	26°	05.9067	<div>40 = White</div> <div>14 = Black</div> <div>ER = Brushed Steel</div> <div>ES = Brushed Bronze</div>	Dimmable on Board 1V = 0-10V, 10% Dimming CB = Dimmable Casambi DA = DALI, 10% Dimming
2700	90	1593	1298	20	26°	05.9062		
3000	90	1751	1431	20	33°	05.9068	<div>40 = White</div> <div>14 = Black</div> <div>ER = Brushed Steel</div> <div>ES = Brushed Bronze</div>	Dimmable on Board 1V = 0-10V, 10% Dimming CB = Dimmable Casambi DA = DALI, 10% Dimming
2700	90	1593	1304	20	33°	05.9063		
3000	90	1751	1390	20	43°	05.9069	<div>40 = White</div> <div>14 = Black</div> <div>ER = Brushed Steel</div> <div>ES = Brushed Bronze</div>	Dimmable on Board 1V = 0-10V, 10% Dimming CB = Dimmable Casambi DA = DALI, 10% Dimming
2700	90	1593	1268	20	43°	05.9064		

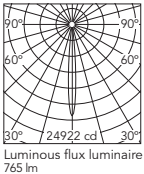
The Tracking Magnet EVO Recessed

High-tech LED lighting system for interior architecture

Photometric Light Shadow Spot 60

Super Spot 9°

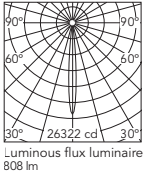
2700K



Beam Angle: 9°

h(m)	E(lx)	D(m)
1	24922	0.16
2	6230	0.32
3	2769	0.48
4	1558	0.64
5	997	0.80

3000K

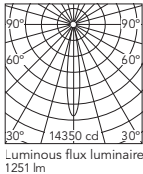


Beam Angle: 9°

h(m)	E(lx)	D(m)
1	26322	0.16
2	6581	0.32
3	2925	0.48
4	1645	0.64
5	1053	0.80

Spot 15°

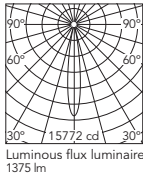
2700K



Beam Angle: 15°

h(m)	E(lx)	D(m)
1	14350	0.27
2	3587	0.54
3	1594	0.81
4	897	1.09
5	574	1.36

3000K

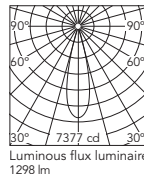


Beam Angle: 15°

h(m)	E(lx)	D(m)
1	15772	0.27
2	3943	0.54
3	1752	0.81
4	986	1.09
5	631	1.36

Medium 26°

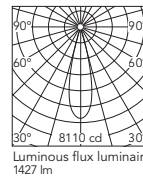
2700K



Beam Angle: 26°

h(m)	E(lx)	D(m)
1	7377	0.45
2	1844	0.91
3	820	1.36
4	461	1.82
5	295	2.27

3000K

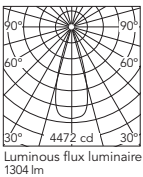


Beam Angle: 26°

h(m)	E(lx)	D(m)
1	8110	0.45
2	2027	0.91
3	901	1.36
4	507	1.82
5	324	2.27

Flood 33°

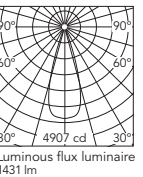
2700K



Beam Angle: 33°

h(m)	E(lx)	D(m)
1	4472	0.60
2	1118	1.20
3	497	1.80
4	279	2.40
5	179	3.00

3000K

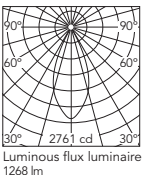


Beam Angle: 33°

h(m)	E(lx)	D(m)
1	4907	0.60
2	1227	1.20
3	545	1.80
4	307	2.40
5	196	3.00

Wide Flood 43°

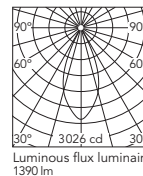
2700K



Beam Angle: 43°

h(m)	E(lx)	D(m)
1	2761	0.79
2	690	1.59
3	307	2.38
4	173	3.17
5	110	3.97

3000K









Beam Angle: 43°

h(m)	E(lx)	D(m)
1	3026	0.79
2	757	1.59
3	336	2.38
4	189	3.17
5	121	3.97

The Tracking Magnet EVO Recessed

High-tech LED lighting system for interior architecture

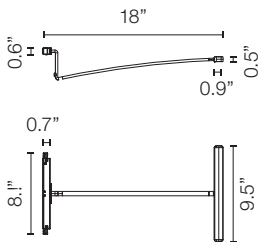
Optional Accessories Light Shadow Spot 60

Honeycomb Super Spot		Honeycomb Spot / Medium / Flood / Wide Flood	
Part Number:		Part Number:	
08.0175.14		08.0176.14	
			
INCREASE		INCREASE	
Dicroic Super Spot	2700K >> 3125±75K 3000K >> 3600±75K	Dicroic Spot / Medium / Flood / Wide Flood	2700K >> 3125±75K 3000K >> 3600±75K
Part Number:		Part Number:	
08.0796.00		08.0798.00	
			
DECREASE		DECREASE	
Dicroic Super Spot	2700K >> 2450±75K 3000K >> 2700±75K	Dicroic Spot / Medium / Flood / Wide Flood	2700K >> 2450±75K 3000K >> 2700±75K
Part Number:		Part Number:	
08.0797.00		08.0799.00	
			

The Tracking Magnet EVO Recessed

High-tech LED lighting system for interior architecture

Wallee



Wallee is only allowed with Tracking Magnet Recessed and horizontal installation. Includes frame holder up to 5kg. When installing Wallee, it may require a manual adjustment by the client/installer. Find information on how to carry out this adjustment in the instruction sheets.

CCT	CRI	Initial Lumen	Delivered Lumens	Watts	Beam Spread	Part Number	Finish	Dimming Protocol	Photometric												
3000	90	818	454	10	96°	03.8091	<div><div></div>40 = White</div> <div><div></div>14 = Black</div>	Dimmable on Board	<div><p>Luminous flux luminaire 454 lm</p></div> <table><thead><tr><th>E(x)</th><th>D(m)</th></tr></thead><tbody><tr><td>183</td><td>2.21</td></tr><tr><td>46</td><td>4.43</td></tr><tr><td>20</td><td>6.64</td></tr><tr><td>11</td><td>8.85</td></tr><tr><td>7</td><td>11.07</td></tr></tbody></table>	E(x)	D(m)	183	2.21	46	4.43	20	6.64	11	8.85	7	11.07
E(x)	D(m)																				
183	2.21																				
46	4.43																				
20	6.64																				
11	8.85																				
7	11.07																				
2700	90	773	454	10	96°	03.8090	<div><div></div>40 = White</div> <div><div></div>14 = Black</div>	Dimmable on Board	<div><p>Luminous flux luminaire 454 lm</p></div> <table><thead><tr><th>E(x)</th><th>D(m)</th></tr></thead><tbody><tr><td>183</td><td>2.21</td></tr><tr><td>46</td><td>4.43</td></tr><tr><td>20</td><td>6.64</td></tr><tr><td>11</td><td>8.85</td></tr><tr><td>7</td><td>11.07</td></tr></tbody></table>	E(x)	D(m)	183	2.21	46	4.43	20	6.64	11	8.85	7	11.07
E(x)	D(m)																				
183	2.21																				
46	4.43																				
20	6.64																				
11	8.85																				
7	11.07																				

The Tracking Magnet EVO Recessed

High-tech LED lighting system for interior architecture

Light Strip

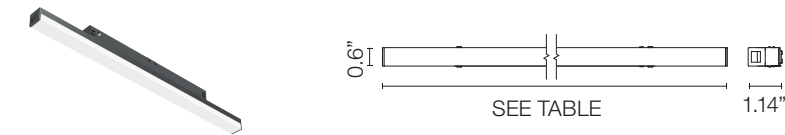


Table with 9 columns: Length, CRI, CCT, Initial Lumens, Delivered Lumens, Watts, Part Number, Finish, Dimming Protocol. It lists five different lengths of the light strip (11.8", 23.6", 35.4", 47.2", and 59") with their respective specifications.

Table with 9 columns: Length, CRI, CCT, Initial Lumens, Delivered Lumens, Watts, Part Number, Finish, Dimming Protocol. It lists five different lengths of the light strip (11.8", 23.6", 35.4", 47.2", and 59") with their respective specifications.

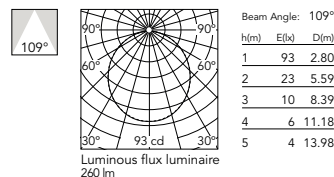
## The Tracking Magnet EVO Recessed

High-tech LED lighting system for interior architecture

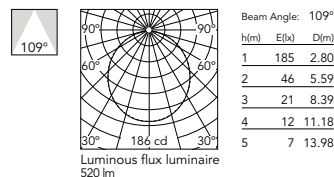
### Photometric

2700 K

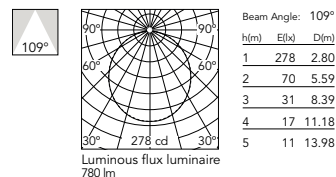
11.8" (300 mm)



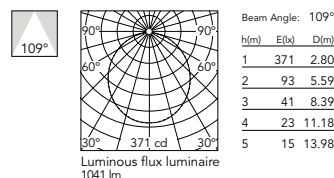
23.6" (600 mm)



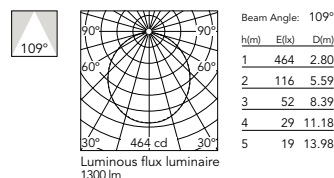
35.4" (900 mm)



47.2" (1200 mm)

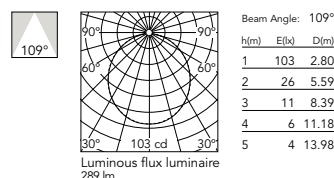


59" (1500 mm)

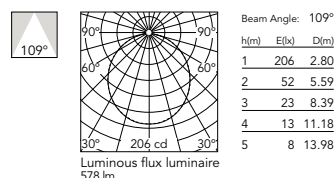


3000 K

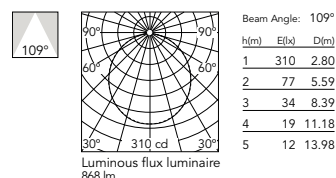
11.8" (300 mm)



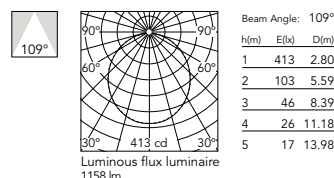
23.6" (600 mm)



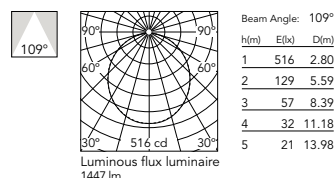
35.4" (900 mm)



47.2" (1200 mm)



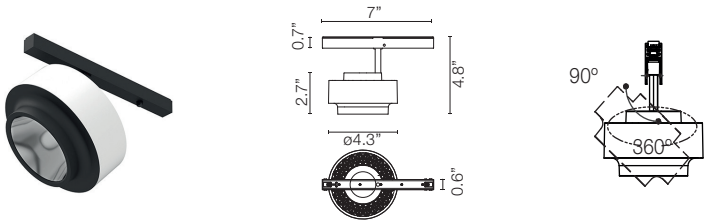
59" (1500 mm)



The Tracking Magnet EVO Recessed

High-tech LED lighting system for interior architecture

Anthony Spot Track



CCT	CRI	Initial Lumens	Delivered Lumens	Watts	Beam Spread	Part Number	Finish	Dimming Protocol	Photometric
3000	90	1730	1425	17.6	15°	03.8027	<div>40 = White</div> <div>14 = Black</div> <div>05 = Chrome</div>	A Dimmable on Board A1V = 0-10V, 10% Dimming ADA = DALI, 10% Dimming	<div></div> <div>Beam Angle: 15° h(m) E(lx) D(m) 1 14285 0.27 2 3571 0.54 3 1587 0.81 4 893 1.07 5 571 1.34 Luminous flux luminaire 1425 lm</div>
2700	90	1620	1241	17.6	15°	03.8025			<div></div> <div>Beam Angle: 15° h(m) E(lx) D(m) 1 12442 0.27 2 3110 0.54 3 1382 0.81 4 778 1.07 5 498 1.34 Luminous flux luminaire 1241 lm</div>
3000	90	1730	1426	17.6	28°	03.8028		B Dimmable on Board B1V = 0-10V, 10% Dimming BDA = DALI, 10% Dimming	<div></div> <div>Beam Angle: 28° h(m) E(lx) D(m) 1 5799 0.49 2 1450 0.98 3 644 1.47 4 362 1.97 5 232 2.46 Luminous flux luminaire 1399 lm</div>
2700	90	1620	1242	17.6	28°	03.8026			<div></div> <div>Beam Angle: 28° h(m) E(lx) D(m) 1 5145 0.49 2 1286 0.98 3 572 1.47 4 322 1.97 5 206 2.46 Luminous flux luminaire 1242 lm</div>



The Tracking Magnet EVO Recessed

High-tech LED lighting system for interior architecture

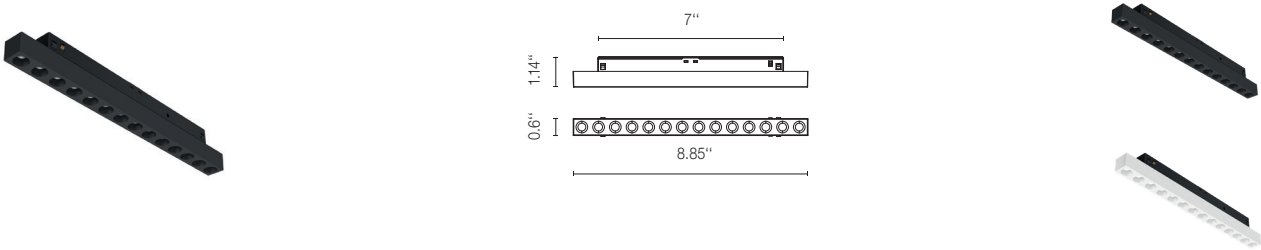
Optional Accessories Anthony Spot

Honeycomb	Elliptical Lens	Flood Lens (28° Anthony Fixture + Flood Lens = 35°)
Part Number: 08.8419.14A	Part Number: 08.8418.68A	Part Number: 08.0050.00
		

The Tracking Magnet EVO Recessed

High-tech LED lighting system for interior architecture

Multi Spot Mini How to Specify ex. 05.3550.14 / 05.3550.14.CB / 05.3550.14.DA / 05.3550.14.1V

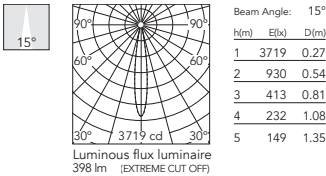


CCT	CRI	Initial Lumens	Delivered Lumens	Watts	Beam Spread	Part Number	Finish	Dimming Protocol
2700	90	654.12	398	7.5	15°	05.3550	<div>40 = White</div> <div>14 = Black</div>	Dimmable on Board 1V = 1-10V, 10% Dimming CB = Dimmable Casambi DA = DALI, 10% Dimming
2700	90	654.12	424	7.5	20°	05.3552		
2700	90	654.12	391	7.5	32°	05.3554		
3000	90	665.41	405	7.5	15°	05.3551	<div>40 = White</div> <div>14 = Black</div>	Dimmable on Board 1V = 1-10V, 10% Dimming CB = Dimmable Casambi DA = DALI, 10% Dimming
3000	90	665.41	431	7.5	20°	05.3553		
3000	90	665.41	397	7.5	32°	05.3555		

Photometric

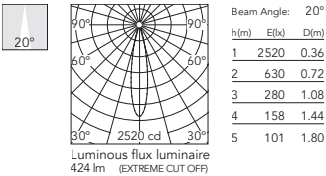
Spot 15°

2700 K



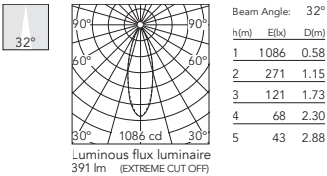
Medium 20°

2700 K

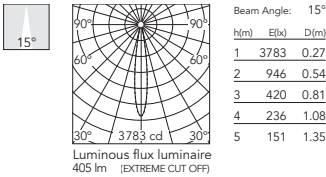


Flood 32°

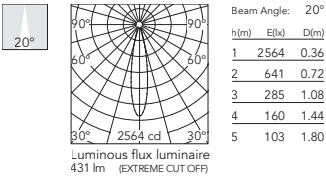
2700 K



3000 K



3000 K



3000 K

